

Products Terminal Expansion



To protect our clients' interests, images are not taken from the project but are used for graphical purposes only.

Client: Midstream Company

Location: Texas

Start Date: December 2015

Completion Date: July 2016

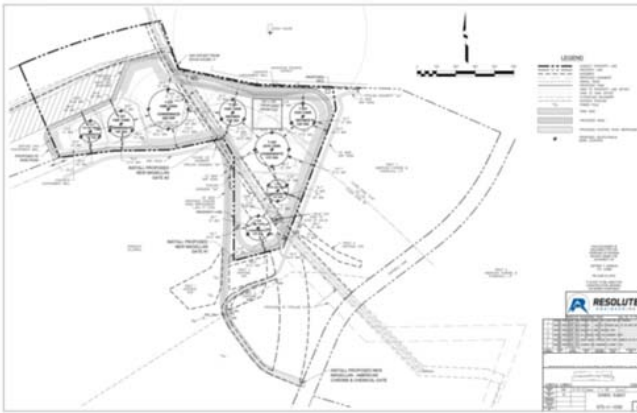
Utilizing survey data files of existing property boundaries, and facility infrastructure, Resolute's Civil & Mechanical engineers were tasked with preliminary grassroots layout of a products tank terminal with truck unloading and barge loading capabilities.



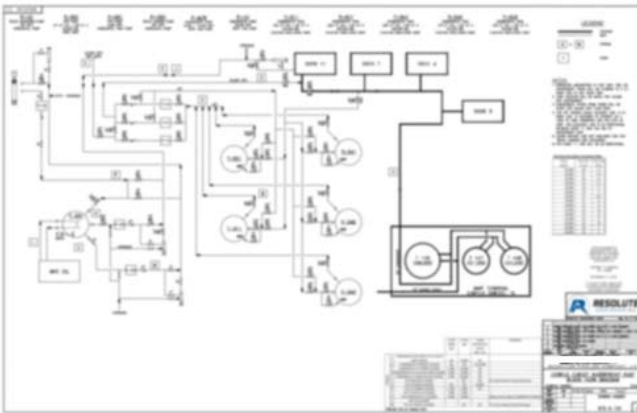
RELATED SERVICES AND TASKS

Considered layout factors such as civil design for site grading cut/fill balance, NFPA tank spacing, facility avoidance, existing access points, and unique property boundaries.





Developed Preliminary PFDs showing pump and line sizing.



Estimated total project costs, and prepared a preliminary project plan.

Prepared a custom geotechnical specification for the unique site geological features, with tank and foundation design in mind.



UNIQUE PROBLEMS / SOLUTIONS

Siting of tankage and impoundment challenges included accommodating a pipeline corridor and HDD workspace for a channel drill within the tank farm boundary. This required real time communication with multiple client contacts to balance the needs of all parties.

Tulsa Office

321 S. Boston Ave.
Suite 300
Tulsa, OK 74103

Denver Office

999 18th Street
Suite 3000
Denver, CO 80202

Houston Office

Pennzoil Place
700 Milam St, Ste 1300
Houston, TX 77002

Calgary Office

10 Floor Bankers Hall West
888 3rd Street South West
Suite 1000
Calgary, Alberta T2P 5C5
403-861-6302

North Dakota Office

108 1st Ave SE, Unit 3
PO Box 842
Kenmare, ND 58746-0842



RESOLUTETM
ENGINEERING

(918) 505-7880

website@resolute-engineering.com