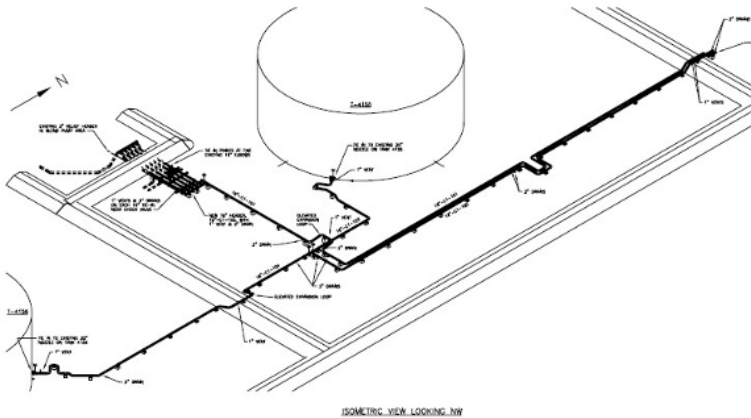


El Dorado Pipeline Connection



Client: Holly Energy Partners

Location: El Dorado, KS
Start Date: April 2017
Completion Date: November 2017

A new crude oil pipeline was built to bring product into Holly Energy Partners' crude oil facility in El Dorado, KS. The operator brought the new pipeline into a facility next door to the El Dorado Terminal. They needed a plan for connecting the two facilities. Resolute assisted Holly Energy Partners in developing a plan to connect the new pipeline to their El Dorado facility.



RELATED SERVICES AND TASKS

Project Management

- Procedure Development
- Survey Management
- Material Specifications

Structural Engineering & Design

- Tank Connection

Civil Engineering & Design

- Manifold Connection

Mechanical Engineering & Design



UNIQUE PROBLEMS / SOLUTIONS

Resolute Engineering provided engineering and design to assist in developing operational goals. Resolute managed survey contractors, developed P&IDs, designed piping and support to tie in the pipeline to several tie-in points at El Dorado, including manifolds and tanks, and developed and provided tie-in procedures. We provided project management; plan, profile, and isometric; bill of materials; and used AutoCAD Plant 3D. Resolute also designed walkways for valve access and pipe and dike crossing.

Holly Energy Partners used the design package and procedures created by Resolute Engineering to provide general contractors and material suppliers with specification and information to complete the project.

Tulsa Office

321 S. Boston Ave.
Suite 300
Tulsa, OK 74103

Denver Office

999 18th Street
Suite 3000
Denver, CO 80202

Houston Office

Pennzoil Place
700 Milam St, Ste 1300
Houston, TX 77002

Calgary Office

10 Floor Bankers Hall West
888 3rd Street South West
Suite 1000
Calgary, Alberta T2P 5C5
403-861-6302

North Dakota Office

108 1st Ave SE, Unit 3
PO Box 842
Kenmare, ND 58746-0842



RESOLUTETM
ENGINEERING

(918) 505-7880

website@resolute-engineering.com