

# Products Terminal Expansion



To protect our clients' interests, images are not taken from the project but are used for graphical purposes only.

## Client: Midstream Company

Location: Texas

Start Date: December 2015

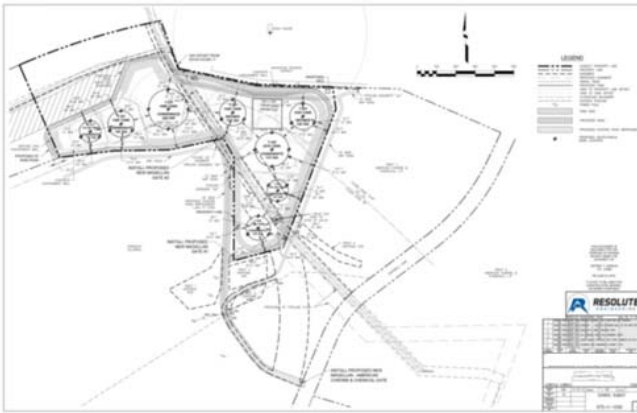
Completion Date: July 2016

Utilizing survey data files of existing property boundaries, and facility infrastructure, Resolute's Civil & Mechanical engineers were tasked with preliminary grassroots layout of a products tank terminal with truck unloading and barge loading capabilities.

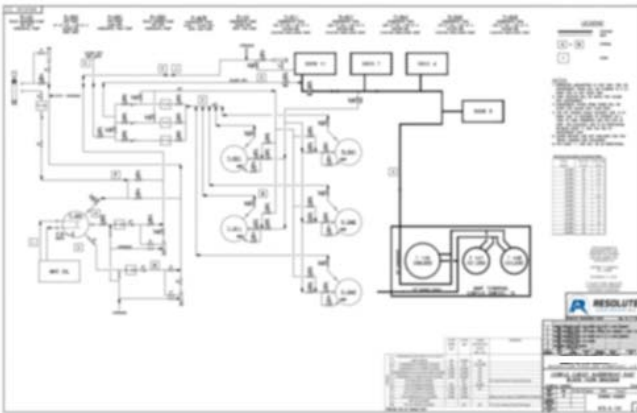


## RELATED SERVICES AND TASKS

Considered layout factors such as civil design for site grading cut/fill balance, NFPA tank spacing, facility avoidance, existing access points, and unique property boundaries.



Developed Preliminary PFDs showing pump and line sizing.



Estimated total project costs, and prepared a preliminary project plan.

Prepared a custom geotechnical specification for the unique site geological features, with tank and foundation design in mind.



## UNIQUE PROBLEMS / SOLUTIONS

Siting of tankage and impoundment challenges included accommodating a pipeline corridor and HDD workspace for a channel drill within the tank farm boundary. This required real time communication with multiple client contacts to balance the needs of all parties.

### Tulsa Office

321 S. Boston Ave.  
Suite 300  
Tulsa, OK 74103

### Denver Office

999 18th Street  
Suite 3000  
Denver, CO 80202

### Houston Office

Pennzoil Place  
700 Milam St, Ste 1300  
Houston, TX 77002

### Calgary Office

10 Floor Bankers Hall West  
888 3rd Street South West  
Suite 1000  
Calgary, Alberta T2P 5C5  
403-861-6302

### North Dakota Office

Kenmare, ND



**RESOLUTE**<sup>TM</sup>  
ENGINEERING

(918) 505-7880

[website@resolute-engineering.com](mailto:website@resolute-engineering.com)